





Schofield way, Hoddesdon, EN11 8GF

Westwood Leber are delighted to bring to the market this charming ex-show home apartment, offering a perfect blend of comfort and convenience. This modern property is located in one of the area's most sought-after new build developments, situated in a prime location. Residents will enjoy easy access to local amenities, shops, and excellent public transport links.

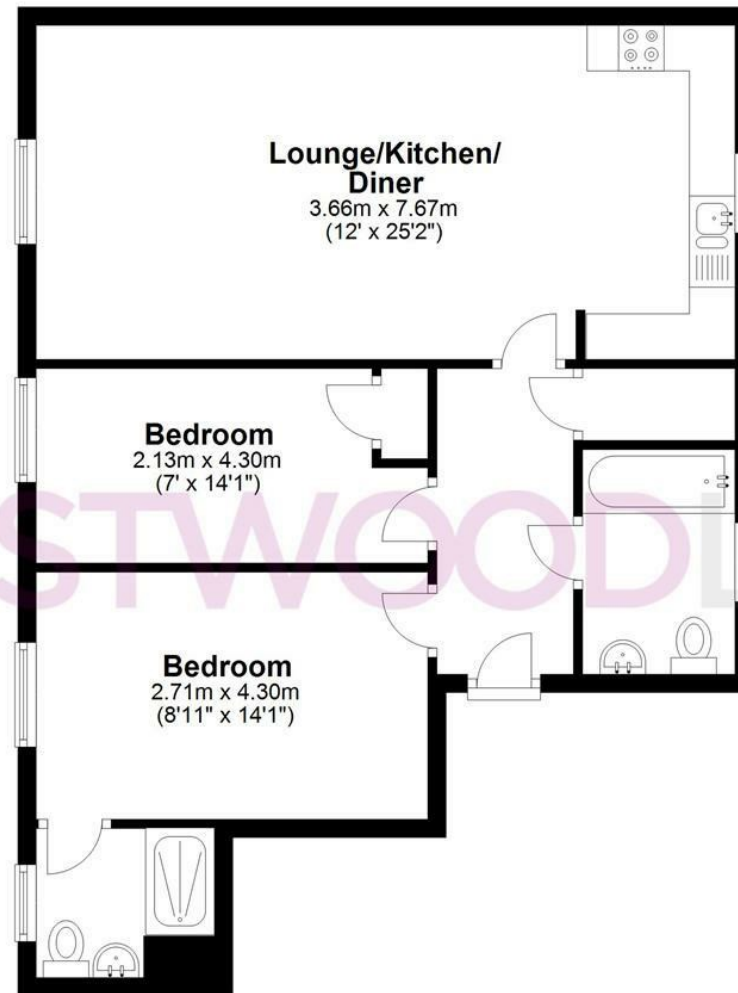
Built less than a year ago, this deceptively spacious apartment has been immaculately maintained by the current owners, with accommodation comprising: two well-sized bedrooms, a luxury bathroom, an en-suite shower room to the master bedroom, a large entrance hallway with ample storage, and a fabulous open-plan kitchen/living room. The property also benefits from a security entry phone system, ALLOCATED PARKING FOR 2 CARS, and plenty of visitor parking spaces. Being just a year old, the new owner will benefit from low running costs and a valid NHBC certificate.



WESTWOODLEBER

Apartment

Approx. 64.8 sq. metres (697.6 sq. feet)



Total area: approx. 64.8 sq. metres (697.6 sq. feet)

THE FLOORPLAN IS FOR ILLUSTRATIVE PURPOSES ONLY AND IS NOT TO SCALE. Measurements and features are approximate and may differ from the actual property. Verify all details independently; no liability is accepted for errors or omissions.

Property marketing provided by www.fotomarketing.co.uk







